

A New Solution in the HD830i Series



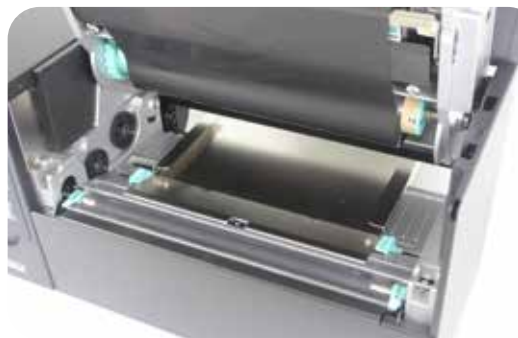
Our Perfect Eight-Inch Wide
Industrial Barcode Printer



HD830i CS Cut Sheet

Accessory Option – Sheet Media Guide

The sheet media guide is designed to smoothly channel A4 sheets and avoid creasing.



HD830i Specifications

Model Name		HD830i
Print Method		Thermal Transfer / Direct Thermal
Resolution		300 dpi (12 dot/mm)
Print Speed		4 ips (102 mm/s)
Print Width		8.64" (219.5mm)
Print Length		Min. 1" (25.4 mm)** ; Max . 40" (1,016 mm)
Processor		32-bit RISC CPU
Memory	Flash SDRAM	128 MB Flash (60 MB for user storage) 32 MB
Sensor Type		Adjustable reflective sensor and transmissive sensor, central aligned
Media	Type	Continuous form, gap labels, black mark sensing, and punched hole; label length set by auto sensing or programming
	Width	Tear : Min. 4" (108 mm) – Max. 10" (255 mm) Cutter : Max. 8.5" (215.9 mm)
	Thickness	Min. 0.002" (0.06 mm) – Max. 0.01" (0.25 mm)
	Media Capacity	Media OD up to 10" Max.
Ribbon	Core diameter	Min. 1.5" (38.1 mm)-Max. 3" (76.2 mm)
	Types	Wax, wax/resin, resin
	Length	Max.981' (300 m)
	Width	Min. 4.3" (110 mm) – Max. 8.66" (220 mm)
Printer Language	Ribbon roll diameter	2.67" (68 mm) Max.
	Core diameter	1" (25.4 mm)
Software	Label design software	EZPL, GEPL, GZPL auto switch
	Driver	GoLabel (for EZPL only) Windows 2000, XP, Vista, Windows 7, 8.1 and 10 , Windows Server 2003 , 2008 & 2010
	DLL	MAC · Linux Win CE, .NET, Andriod, Windows Mobile, Windows 2000 / XP / VISTA / Windows 7 / Windows 8.1/Windows 10
Resident Fonts	Bitmap Fonts	6, 8, 10, 12, 14, 18, 24, 30, 16X26 and OCR A & B Bitmap fonts 90°, 180°, 270° rotatable, single characters 90°, 180°, 270° rotatable
	TTF Fonts	Bitmap fonts 8 times expandable in horizontal and vertical directions TTF Fonts (Bold / Italic / Underline). 0°,90°, 180°, 270° rotatable
Download Fonts	Bitmap Fonts	90°, 180°, 270° rotatable, single characters 90°, 180°, 270° rotatable 16x16, 24x24. Traditional Chinese (BIG-5), Simplified Chinese (GB2312), Japanese (S-JIS), Korean (KS-X1001)
	Asian Fonts	90°, 180°, 270° rotatable and 8 times expandable in horizontal and vertical directions TTF Fonts (Bold / Italic / Underline). 0°,90°, 180°, 270° rotatable
Barcodes	1-D Bar Codes	China Postal Code, Codabar, Code 11, Code 32,Code 39, Code 93, Code 128 (subset A, B, C), EAN-8, EAN-13, EAN 8/13 (with 2 & 5 digits extension), EAN 128, FIM, German Post Code, GS1 DataBar, HIBC, Industrial 2 of 5 , Interleaved 2-of-5 (I 2 of 5), Interleaved 2- o-f 5 with Shipping Bearer Bars, ISBT – 128, ITF 14, Japanese Postnet, Logmars, MSI, Postnet, Plessey, Planet 11 & 13 digit, RPS 128, Random Weight, Standard 2 of 5, Telepen, UPC-A, UPC-E, UPC-A and UPC-E with EAN 2 or 5 digit extension, UCC 128, UCC/EAN-128 K-Mart
	2-D Bar Codes	Aztec code, Code 49,Codablock F , Datamatrix code, MaxiCode, Micro PDF417, Micro QR code, PDF417,QR code, TLC 39
Code Pages		Codepage 437, 737,850, 851, 852, 855, 857, 860, 861, 862, 863, 865, 866, 869, Windows 1250, 1251, 1252, 1253, 1254, 1255, 1257 Unicode UTF8 · UTF16BE · UTF16LE
Graphics		Resident graphic file types are BMP and PCX, other graphic formats are downloadable from the software
Interfaces		<ul style="list-style-type: none"> • USB 2.0 (B-Type) • Serial port: RS-232 (DB-9) • IEEE 802.3 10/100 Base-Tx Ethernet port (RJ-45) • USB Host (A-Type) • Backlight 3.2" touch screen LCD • 1 Power on/standby button with dual colour LED backlight • 1 FEED / PAUSE / CANCEL button with dual colour LED : Ready (Green); Error (Red) • 1 Calibration button at rear panel
Control Panel		
RTC		Standard
Power		Auto Switching 100-240V AC, 50-60Hz
Environment	Operation Storage	41°F to 104°F (5°C to 40°C), 20-85%, non-condensing -4°F to 140°F (-20°C to 60°C), 10-90%, non-condensing
Agency Approvals		CE (EMC) · FCC Class B · CB · UL · cUL · CCC
Dimension	Length x Width x Height	221 mm x 431 mm x 224 mm
	Weight	11.7 Kg, excluding consumables
Options		Cutter (Dealer Install)
		Parallel port adaptor module (Centronic female 36-pin)(Dealer Install)
		Bluetooth (Dealer Installer) Wireless LAN (IEEE 802.11 b/g/n) (Dealer Install)

* Specifications are subject to change without notice. All company and/or product names are trademarks and/or registered trademarks of their respective owners.

** Minimum print height and maximum print speed specification compliance can be dependent on non-standard material variables such as label type, thickness, spacing, liner construction, etc. GoDEX is pleased to test non-standard materials for minimum print height, and maximum print speed capability.

Applications

Applications for Labels & Barcodes

HD830i as versatile as for most applications.



Logistics

shipping label, package tracing, package label, package receipt etc.

Warehouse

shelf label, product label, stocking management, exterior/pallet labeling etc.

Manufacturing

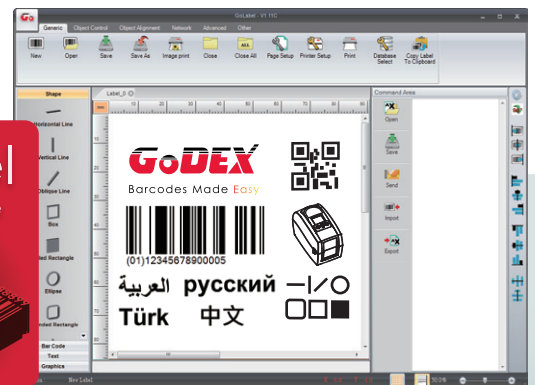
product label, manufacturing label, exterior/pallet label, trade, stocking and document management etc.

GoDEX LABEL DESIGN SOFTWARE

GoLabel Software / User Friendly

GoLabel is based on a WYSIWYG (what you see is what you get) user interface, makes everything so easy for you to create and print barcode labels. GoLabel is the first-choice label design software that you can't miss it!

Go visit www.godexintl.com and download GoLabel to experience it!

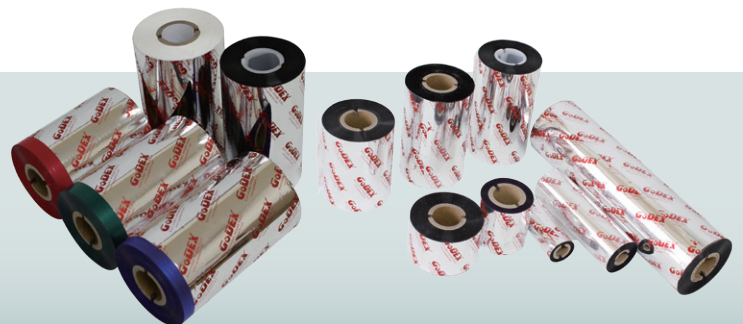


GoDEX RIBBONS

High quality GoDEX thermal transfer ribbons.

GoDEX offers premium thermal transfer ribbons that will fit most of your printing applications.

- Wax
- Wax/ Resin
- Resin
- Near Edge



Martek Industries Ltd
12B Ridings Park Industrial Estate
Cannock - WS11 7FJ

Tel: 01543 502202
godex.co.uk
sales@godex.co.uk