

Speed is Power

M3 MOBILE

SM15 Accessories

An abstract graphic consisting of several overlapping, flowing, wavy bands of light blue and white, creating a sense of motion and depth. The bands curve and ripple across the lower half of the page, starting from the left and moving towards the right.

INDEX

CRADLE	2slot charging cradle / 2slot ethernet cradle 8slot charging cradle / 8slot ethernet cradle Vehicle cradle HDMI cradle
SNAP ON	USB gender / USB charging snap on(bottom) USB c-type / USB charging snap on UHF snap on payment sled
TRIGGER	pistol grip(scanning) UHF gun reader Long Range pistol grip
WEARABLE	arm band belt type ring trigger ring scanner
MISCELLANEOUS	Boot / Hand strap / Screen protector / stylus pen / USB cable

2 slot Charging Cradle

- Simultaneously charge terminal and battery
- Standard/External battery charging available
- Reasonable price/Fast Charging

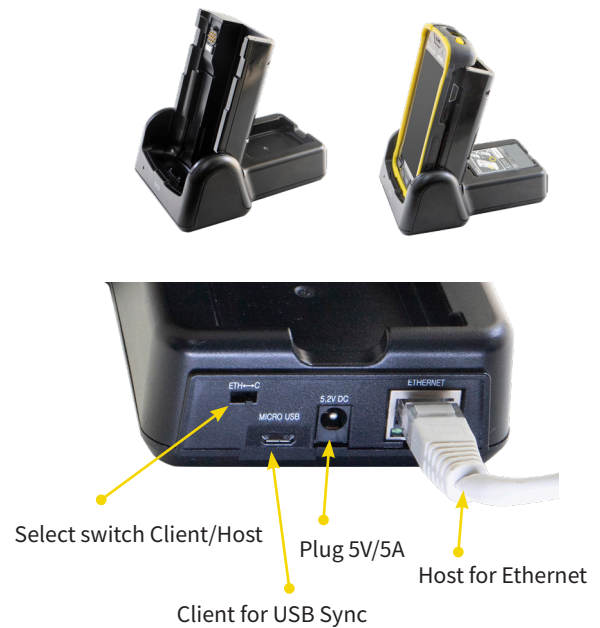
Keypoints



- When even the terminal wears protective boots, charging has no matter at all.
- The cradle supports both capacities with fast charging. (Charging time enhances almost by 30 minutes)
- Charging cradle is basically required item if users don't want ethernet. It has competitive price range.

2 slot Ethernet Cradle

- Charging in 2 Hours 20 Minutes (using standard battery)
- Ethernet Connection and USB Sync
You can use Local Area Network Via SM15 Series with Ethernet Cradle while using data communication



- Transmission rate in 10/100 Mbps
- Requires power supply (in case of charging)
micro-USB (in case of data communication)
LAN cable (in case of ethernet)

Specification

Power supply and power cord are sold separately. Power cord includes 6 countries' type. (EU, UK, US, KR, AU, CN)

I / O	N/A
Input	5V / 5A
Dimension	110 x 150 x 80 mm
Weight	322.5 g
Compatibility	SM10 LTE, SM15X, SM15N, SM15W

Micro USB-A Client : 1 Slot, Ethernet : 1 Slot
5V / 5A
110 x 150 x 150mm
430 g
SM10 LTE, SM15X, SM15N, SM15W

Speed is Power

M3 MOBILE

8 slot Charging Cradle

- Fast Charging : Charging in 2 Hours 20 Minutes (using standard battery)
- Can use with Rugged boots : Slide the switch -> Remove the cup -> Equip device with boots

Keypoints



- Multi-slot charging cradle can be configured to hold both maximum of four mobile devices and four battery charging stations.
: improves utilization of valuable backroom storage space.
- Composition
Requires 8 slot power adaptor, power cable

8 slot Ethernet Cradle

- Magnet linkage between terminal and cradle
- Rear Pin connection



- Sync is stable. Local Area Network is usually not disconnected well. Also, users are able to attach terminal by one hand.
- Lying pose increases area of connection thus stability is growing up mechanically.

Specification

I / O	N/A
Input	12V / 10A
Dimension	110 x 150 x 70mm
Weight	727 g
Compatibility	SM10 LTE, SM15X, SM15N, SM15W

Ethernet : 2 Slot
12V / 10A
450 x 150 x 160 mm
1,280 g
SM10 LTE, SM15X, SM15N, SM15W

Vehicle Cradle

- Push the terminal to back direction using the top holder flexibly
 - Integral type : Cigar adaptor and cradle
-



Keypoints



Vehicle Cradle and Cigar Jack (one body)



Vehicle Ram Mount (suction / screw type)



- Top holder tightly grip the terminal considering size of the terminal.
 - 3 Type Ram mount
Longest ram mount can be used in big truck.
-

Specification

Input	5V / 3A
Dimension	120 x 210 x 50mm
Weight	142.1g
Compatibility	SM10 LTE, SM15X, SM15N, SM15W

HDMI Cradle

- HDMI Screen Mirroring Function
Plug to the HDMI Display (Screen) Mount the device to the cradle Plug HDMI cable to the HDMI Cradle



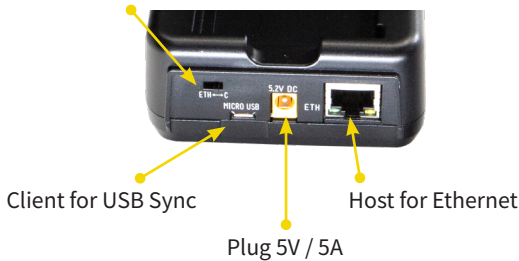
Keypoints



- Connecting to laptop, the screen of device can be shared when staffs are in backroom. Handheld Terminal is easy to use in a small space of retail sales area, but it is inconvenient to work with processing for screen.
- To overcome these inconveniences, there is a cradle that has HDMI and USB (for keyboard and mouse connection) ports.

- 2 USB ports to connect with peripheral devices
- HDMI port to connect external LCD

Select Switch Client / Host



Specification

I/O
HDMI Ver1.3 : 1 Slot
Micro USB-A Client : 1 Slot
A-type USB Host : 2 Slot
Ethernet : 1 Slot

Input 5V / 5A

Dimension 113 x 155 x 170mm

Weight 460 g

Compatibility SM10 LTE, SM15X, SM15N, SM15W

USB Gender

- Relieve user’s worries of charging problem When Charging contacts are weary, consumers are able to replace a gender, not 2 pin I/O connector on a device.

Keypoints



- Easily attach & detach To charge SM15 via USB, USB Gender is required. USB only charging is common charging method among users.



Specification

I / O	Micro USB-A
Dimension	35 mm x 50 mm x 10 mm
Weight	23.1 g
Compatibility	SM15X, SM15N, SM15W

USB Charging snap on (bottom)

- Office & Vehicle both using
- Side Locking
- Lightweight



- Snap-on cup with Standard Type A connector.
- less than 100 grams



USB Standard-A Type
480 mm x 90mm x 35 mm
98.1 g
SM15X, SM15N, SM15W

USB C-type snap on

- Slim design enhances frequency of using
- Function as portable station of charging and development

Keypoints



- Rear cover is flatten
- USB-C(USB2.0) Charging & Data-communication

Specification

(It's on design stage so specifications are not fixed yet.)

USB charging snap on

- USB data only / D.C type Charging
- Use charging & USB Sync easily, and stably in narrow space



- Users are able to choose connection type they have.
- Especially in vehicle, USB connection could be dangerous. Charging snap on has stable charge structure thus minimizes these danger.

I / O	Micro USB-A 2.0
Input	5V / 5A
Dimension	81.5 x 84.5 x 38.5 mm
Weight	68.7 g
Compatibility	SM10LTE, SM15X, SM15N, SM15W

Speed is Power

M3 MOBILE

UHF Snap on

- Easy to remove from device
- No extra Battery required
- Portable and conveniently using outside
- Up to 2.5M Recording distance (When the width of UHF Tag Antenna is about 2cm.)



Keypoints



2018 PyeongChang Winter Olympic
Access management



Target and read tag
Sophisticated reading



Check confidential document
Achieve high level of security

Specification

I / O	Micro USB-A 2.0	Frequency	866 ~ 868MHz / 917 ~ 921MHz
Dimension	130 x 85 x 37mm (TBD)	Protocol	EPC C1 GEN2 / ISO18000 – 6C
Weight	149.6 g	R / W Range	Up to 2.5M (Tag and Environment defendant)
Compatibility	SM15X, SM15N, SM15W	RF Power	1 Watt

Speed is Power

M3 MOBILE

Payment sled

- Quickly switch between different modules with features
 - Wireless makes payments acceptable whenever
(In case of using SM15X, SM15N)
-



Keypoints

- If we use the terminals separately, we can't use large field-replaceable battery of payment terminal, which extends life of payment module beyond attached smart device.



Specification

I / O	None I/O Port
Input	5V / 5A
Compatibility	SM15X, SM15N, SM15W

Speed is Power

M3 MOBILE

Pistol grip(scanning)

- Reduce wrist fatigue when workers are using terminals for long time
 - Save time by counting stocks in warehouse
-

Keypoints



Contact with I/O Pin directly without wireless connection



- The design is ergonomically made by measurement in mechanical team.
 - The trigger has essential functions properly in industrial environments.
-

Specification

I / O	Connect with Pogo pin directly without wireless connection
Dimension	141.6 g
Weight	120 x 150 x 80 mm
Compatibility	SM10LTE, SM15X, SM15N, SM15W



UHF Gun trigger

- Reading distance of up to 5 m
- Trigger use(RFID and Scanner)
- Rechargeable and removable battery



Keypoints



Contact with I/O Pin directly without wireless connection



Tag



- External antenna overcomes limits of internal antenna by maximizing its efficiency and reading distance - can reach as far as 5 meters.
- Using RFID, searching tag and automatic sync with application
- Independent battery on gun reader makes it suitable for long hour work shifts. Also, removable battery structure can expand working hours even more.



Gun Battery Charger

Specification

I / O	Micro USB-A 2.0	Frequency	866 ~ 868MHz / 917 ~ 921MHz
Dimension	193×83×177 mm	Protocol	EPC C1 GEN2 / ISO18000 – 6C
Weight	800g	R / W Range	Reading : 0 m – 5 m (depends on tag and environment) writing : 0 m – 2.5 m
Compatibility	SM15X, SM15N, SM15W	RF Power	Anti Collision, RF Power Control (Max. 1W)

Speed is Power

M3 MOBILE

2019.02 release

LRPG(Long range pistol grip)

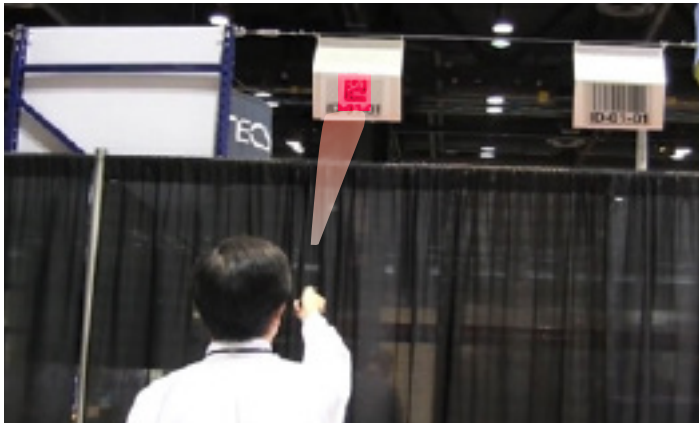
- Long-range scanner is essential to easily read many stacked items in warehouse.
- Maximum reliability in tough industrial environments even without bumper.



Keypoints



Contact with I/O Pin directly without wireless connection



- Long-range scanner is equipped with EX25 scan engine.
- To charge the Pistol grip, SM15 Device charging cradle and power supply is needed.



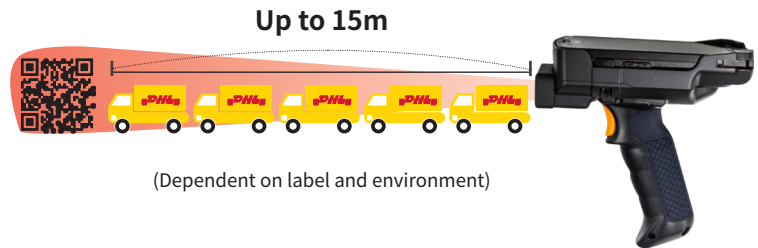
cradle



power supply



Device charging available even when wearing a gun



Specification

I/O	Connect with Pogo pin directly without wireless connection	1D symbologies :
Dimension	170 x 170 x 85 mm	UPC-A, EAN13, EAN8, Code39, Code128, GS1-128, Code11, MSI, Codabar, Interleaved, GS1, ISBT128
Weight	230 g	2D symbologies :
Compatibility	SM15X, SM15N, SM15W	Data Matrix, Micro PDF 417, PDF 417, QR
	R / W Range	Up to 15M (Tag and Environment dependent)

Speed is Power

M3 MOBILE

Arm band type wearable

- Total handsfree solution by one hand
- 2. Simple USB Connect



- Connect with wired Ring Trigger / USB Connect for Headset and wired Ring Scanner or Wearable Sled Alone
- Industrial customized USB-C

Belt type wearable

- Total wearable solution by wrist
- Wrist mounting system fits comfortably on every worker, on any size wrist.



- With a simple tap, pairing with bluetooth headset and hands-free speech-directed solution is available.
- Workers can do multi-step processes very fastly : Speaking, Data-capturing, Saving data to terminal

Specification

I / O	Industrial customized USB-C
Input	N/A
Dimension	82.5 x 119 x 42 mm
Compatibility	SM15X, SM15N, SM15W

I / O	Industrial customized USB-C
Input	N/A
Dimension	472 x 119 x 42 mm
Compatibility	SM15X, SM15N, SM15W

Speed is Power

M3 MOBILE

Ring trigger

- Connect wired ring trigger to the wearable sled and scanning
- Connecting port on wearable sled Office & Vehicle both using

Keypoints



Industrial customized USB-C

- Just clicking the button enables scanning without touching LCD

Specification

I / O	Industrial customized USB-C
Dimension	50 x 35 x 40 mm
Weight	20 g
Compatibility	SM15X, SM15N, SM15W

Ring scanner

- Two types : Wireless(Bluetooth) Type
Wired(USB) Type



WEARABLE

Specification

	Wireless	Wired
I / O	Bluetooth 2.0 EDR	Industrial customized USB-C
Dimension	50 x 35 x 40 mm	64.5 x 36.5 x 46.5 mm
Weight	20 g	93 g
Battery	350mAh Li-ion, Detachable	N/A
Supported Barcodes	1D : EAN-13, EAN-8, UPC-A, UPC-E, ISSN, ISBN, Codabar, Code 128(including FNC1, FNC2 and FNC3), Code 93, ITF-6, ITF-14, Interleaved 2 of 5, Industrial 2 of 5, Standard 2 of 5, Matrix 2 of 5, GS1 Databar (RSS-Expand, RSS-Limited, RSS-14), Code 39, Code 11, MSI-Plessey, Plessey 2D : PDF417, QR Code(Model 1/2, Micro), Data Matrix-(ECC200, ECC000, 050, 080, 100 , 140)	
Compatibility	SM10 LTE, SM15X, SM15N, SM15W	

Speed is Power

M3 MOBILE

Boot

- Boots for SM10/SM15 with handstrap. Attaches Stylus SM10-STYL/SM15-STYL; sold separately)



Hand strap

- Handstrap for SM10, SM15, Detachment available



Screen protector

- Bullet proof Screen Protector for SM15



Stylus pen

- Spare Stylus with tether for SM15



USB cable

- USB Cable, 1.2M, USB-A to Micro USB-A Plug. Client Communication Cable for SM10/SM15 USB port to the host system.

