



THE INTELLIGENT CARD PERSONALIZATION SYSTEM

Altess Elite has a built-in PC card for easy on-site deployment and increased data flow security. Perfect for integration into a business solution, its performance and modularity enable it to respond to multiple card personalization requirements, including smart cards encoded over IP.

INTEGRATED INTELLIGENCE

- With a built-in PC card, the Altess Elite system can be controlled from fixed or mobile terminals.
- Altess Elite is an open system that can communicate with any software application and facilitate its integration.

CONFIGURATION ON REQUEST

- Depending on your requirements, Altess Elite can print cards in batches or individually, either single or double-sided.
- The system can integrate various encoders (magnetic stripe, contact and contactless smartcard) and can be combined with a card lamination module.

MAXIMUM SECURITY

- The PC card and Ethernet connection enable secure communication with third-party applications, either locally or in the cloud.
- The Kineclipse® option, a unique process for masking information on ribbons, maximizes the security of sensitive data.



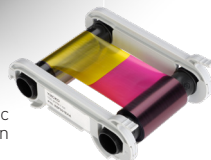
100 card feeder and slot for manual card insertion



Rear output hopper / reject slot for faulty cards

Embedded PC board

Easier handling, and automatic recognition and setup of the ribbon



UNIQUE FUNCTIONALITY

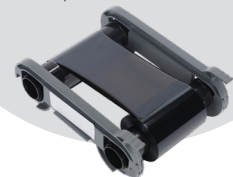
Kineclipse® technique for masking the residual characters on the printing ribbon

Alison Williams
10/04/1995
AWILLIAMS95

AWILLIAMS95
10/04/1995
AWILLIAMS95

Without Kineclipse®

With Kineclipse®



MAIN FEATURES

GENERAL FEATURES

- Color sublimation directly on the card / Resin thermal transfer
- Single or double-sided printing, edge to edge, upgrade kit for optional double-sided printing
- Standard resolution 300 x 300 dpi
- Resolution customizable to 300 x 600 dpi (monochrome and color printing, except Kineclipse®)
- Built-in PC main card
- Optional double-sided lamination module (CLM)

PRINT SPEED¹

- Single-sided:
 - Color (YMCKO): 180 cards/hour
 - Monochrome: 450 cards/hour
- Double-sided:
 - Color (YMCKO-K): 95 cards/hour

CARD MANAGEMENT AND SPECIFICATIONS

- Feeder capacity: 100 cards (0.76 mm – 30 mil)
- Slot for manual insertion of exceptional designs
- Output hopper capacity: 100 cards (0.76 mm – 30 mil)
- Reject hopper/rear hopper capacity: 50 cards (0.76 mm – 30 mil)
- Card thickness:
 - Feeder : 0.50 - 1.25 mm (20 - 50 mil), gauge adjustment
 - Manual insertion slot: 0.50 - 0.76 mm (20 - 30 mil)
- Types of cards: PVC cards, composite PVC cards, PET cards, ABS¹ cards, special varnishes¹
- Card format: ISO CR80 – ISO 7810 (85.98 mm x 85.60 mm)

ADDITIONAL ENCODING MODULES

- Available modules:
 - ISO 7811 HiCo/LoCo, JIS2 magnetic stripe encoder
 - Smartcard contact station ISO 7816-2
 - Contact smartcard encoder – PC/SC, EMV 2000-1
 - Contactless smartcard encoder – ISO 14443A, B, ISO15693, MIFARE, DESFire, HID iCLASS, UHF [standard conformity: EPC C1 Gen2 / ISO18000-6C ETSI EN 302 208 or FCC part 15.247]
 - Other specific encoders on request
- USB encoding over IP
- Combinable options
- On-site or factory fitting

EVOLIS HIGH TRUST® RIBBONS

To maximize the quality and lifetime of the printed cards, the service life of the print head, and the overall reliability of your printer, use Evolis High Trust® ribbons.

- Automatic recognition and setup¹
- Ribbon inserted in a cassette for easier handling
- Ribbon capacity:
 - YMCKO: 300 prints/roll
 - YMCKO-K: 200 prints/roll
 - ½ YMCKO: 400 prints/roll
 - KO: 600 prints/roll
 - Monochrome black ribbon: 2000 prints/roll (integrated ribbon saving)

INTERFACES

- Ethernet TCP-IP 10BaseT, 100BaseT (Traffic Led), cable supplied
- 802.11a/b/g/n wireless connection (optional)

SECURITY

- Space for Kensington® security lock
- Data encryption (SSL/TLS), supports 3DES and AES-256
- Kineclipse® technique for masking data on printing ribbon (optional)

DISPLAY

- Color touchscreen
- Graphic printer notifications²: feeder empty/almost empty, cleaning alerts, ribbon finished/almost finished, etc.

SOFTWARE

- Evolis ONYX SDK for remote monitoring of the printer, easy integration with IT systems, and securing communication

ECO-DESIGN, CERTIFICATION, AND DECLARATION OF CONFORMITY

- Standby mode and reduced power consumption
- CE, FCC, ICES, VCCI
- RoHS

DIMENSIONS AND WEIGHT

- Dimensions (H x W x D): 247 x 205 x 394 mm (9.72" x 8.07" x 15.51")
- Weight: 4.92 kg (10.48 lbs)

WARRANTY CONDITIONS

- 3-year warranty (printer and print head)⁴
- Optional extended warranty available

¹ Under specific conditions / ² Depends on your version of Windows® / ³ Requires the .NET 4.0 client profile
⁴ Warranty subject to strict compliance with specific usage conditions and use of Evolis High Trust® ribbons



HQ | EUROPE - MIDDLE-EAST - AFRICA

Evolis - 14 avenue de la Fontaine - ZI Angers-Beaucouzé - 49070 Beaucouzé - France
 T +33 (0) 241 367 606 - F +33 (0) 241 367 612 - info@evolis.com

US & CANADA - Boston - evolisnortham@evolis.com

LATIN AMERICA - Miami - evolislata@evolis.com

ASIA-PACIFIC - Singapore - evolisasia@evolis.com

CHINA - Shanghai - evolischina@evolis.com

JAPAN - Tokyo - evolisjapan@evolis.com

INDIA - Mumbai - evolisindia@evolis.com